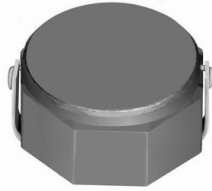


# SMD Power Inductor CDRH8D43HP



## Description

- Ferrite drum core construction.
- Magnetically shielded.
- L × W × H: 8.3 × 8.3 × 4.7 mm Max.
- Product weight: 0.93g(Ref.)
- Moisture Sensitivity Level: 1
- RoHS compliance.

## Environmental Data

- Operating temperature range: -40°C ~ +100°C (including coil's self temperature rise)
- Storage temperature range: -40°C ~ +100°C
- Solder reflow temperature: 260 °C peak.

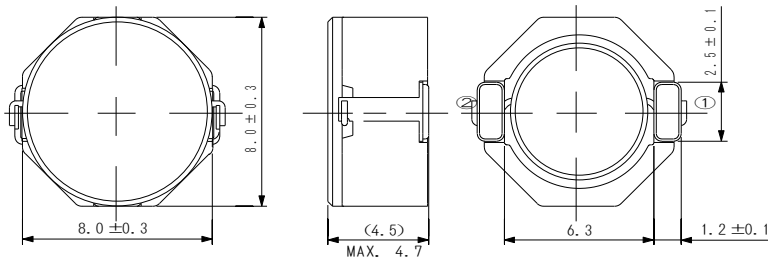
## Packaging

- Carrier tape and reel packaging
- 13" diameter reel
- 500pcs per reel

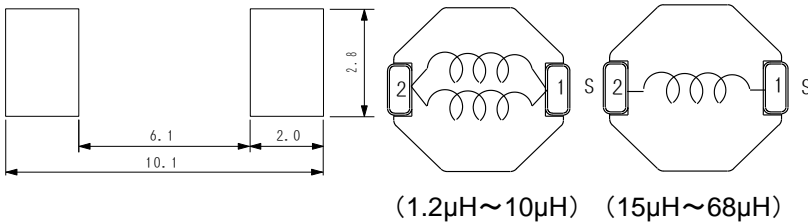
## Applications

- Ideally used in Mobile phone, MP3, PDA , HDD, DSC/DVC, etc as DC-DC converter inductors.

## Dimension - [mm]



## Land pattern and Schematics - [mm]



## Electrical Characteristics

Part Name	Stamp	Inductance (μH) [ within ] ※1	D.C.R. mΩ Max. (Typ.) at 20°C	Saturation Current (A) ※2		Temperature Rise Current (A) ※3
				at 20°C	at 100°C	
CDRH8D43HPNP-1R2NC	1R2	1.2 ± 30%	16.5(12.3)	12.6	10.8	5.6
CDRH8D43HPNP-2R7NC	2R7	2.7 ± 30%	19.5(15.9)	8.6	7.0	5.1
CDRH8D43HPNP-4R7NC	4R7	4.7 ± 30%	27.0(20.7)	6.2	5.2	3.9
CDRH8D43HPNP-6R8NC	6R8	6.8 ± 30%	36.0(31.2)	5.6	4.5	3.3
CDRH8D43HPNP-100NC	100	10 ± 30%	53.0(44.4)	4.3	3.5	2.5
CDRH8D43HPNP-150NC	150	15 ± 30%	75.0(64.4)	3.7	2.9	2.0
CDRH8D43HPNP-220NC	220	22 ± 30%	125(103)	3.0	2.4	1.5
CDRH8D43HPNP-330NC	330	33 ± 30%	150(123)	2.5	2.0	1.4
CDRH8D43HPNP-470NC	470	47 ± 30%	238(183)	2.0	1.6	1.2
CDRH8D43HPNP-680NC	680	68 ± 30%	363(294)	1.6	1.4	0.8

※1. Inductance measuring conditions at 100kHz.

※2. Saturation current: The DC current at which the inductance decreases to 65% of its nominal value.

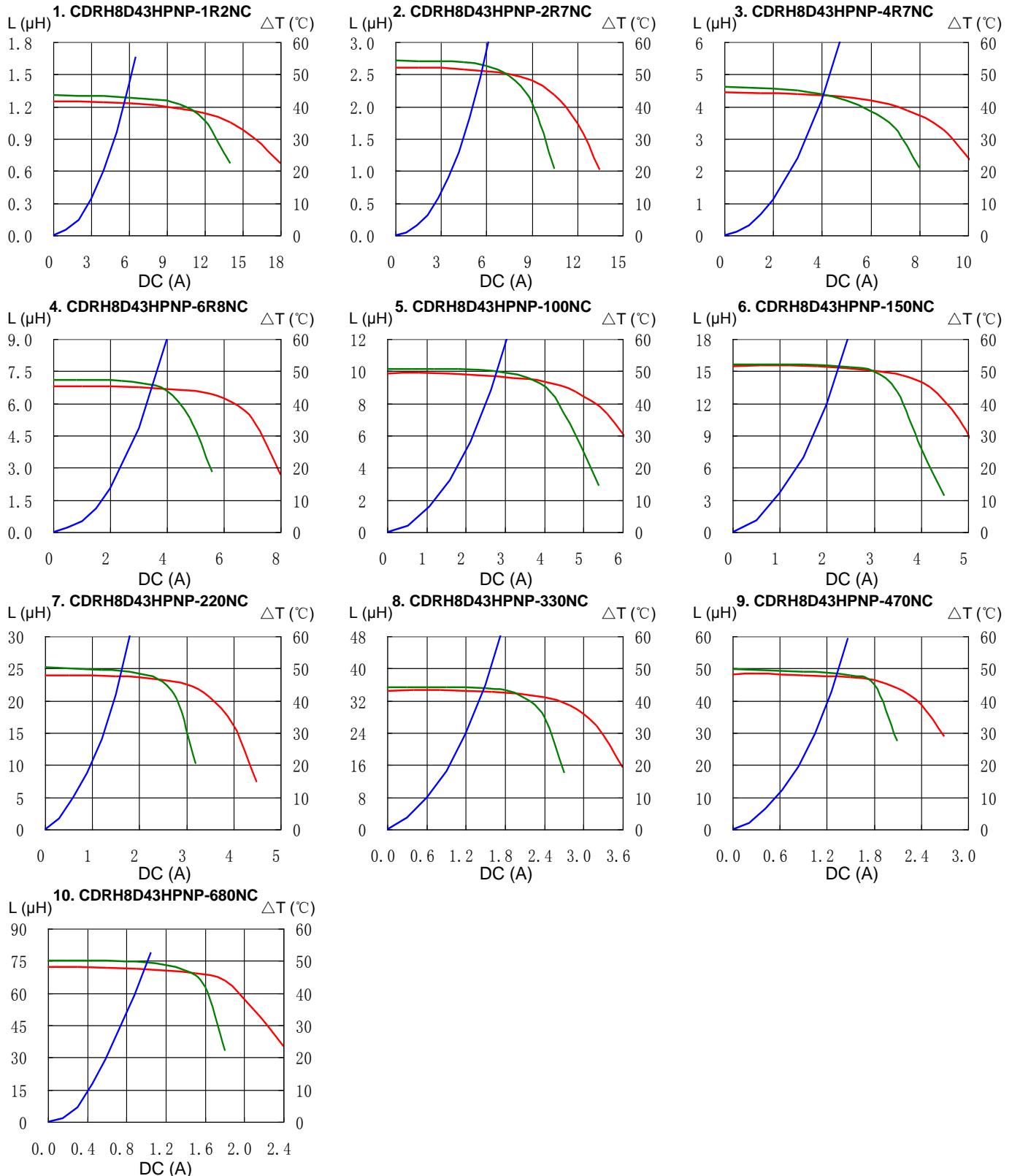
※3. Temperature rise current: The DC current at which the temperature rise is Δt=40°C.(Ta=20°C)

# SMD Power Inductor CDRH8D43HP

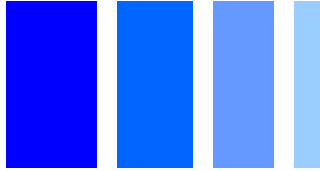


## Saturation Current & Temperature Rise Graph

— L (20°C) — L (100°C) —  $\Delta T$

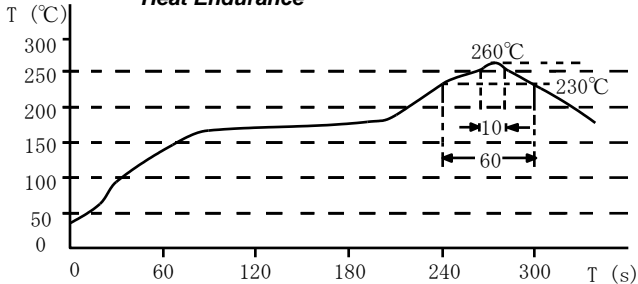


# SMD Power Inductor CDRH8D43HP



## Solder Reflow Condition

*Heat Endurance*



*Temperature Chart*

